

COMMUNICATING WHAT WE DO:

LEISC now has a website!

<https://lamont.columbia.edu/leisc>

Find out about recent accomplishments, dig into the archive of Nature Notes, access resources on what to do if you find an injured or orphaned animal (including wildlife rehabilitator contact info), and explore a growing repository of beautiful wildlife and Lamont campus photos.

Keep those photos coming!



A view down the Lamont Hall stairwell. Photo credit: Timothy Trimble (LDEO).

UPDATE: PROTECTING BIRDS

32 bird collisions at Monell have been reported to [dBird](#) so far this fall. Dedicated collision monitoring is estimated to record only $\leq 10\%$ of the birds that collide with glass – this estimate is far smaller when birds are incidentally reported (NYC Bird Alliance, pers. comm), as is the case at Monell. To address the problem, a group of Lamonters, including members of CIESIN, BPE, LEISC, and B&G, came together to make and install

over 30 [Acopian Birdsavers](#) on the east-facing windows of the north wing of Monell. These paracord “curtains” have been tested and approved by the American Bird Conservancy as “easy to install, long-lasting and highly effective” against bird strikes.

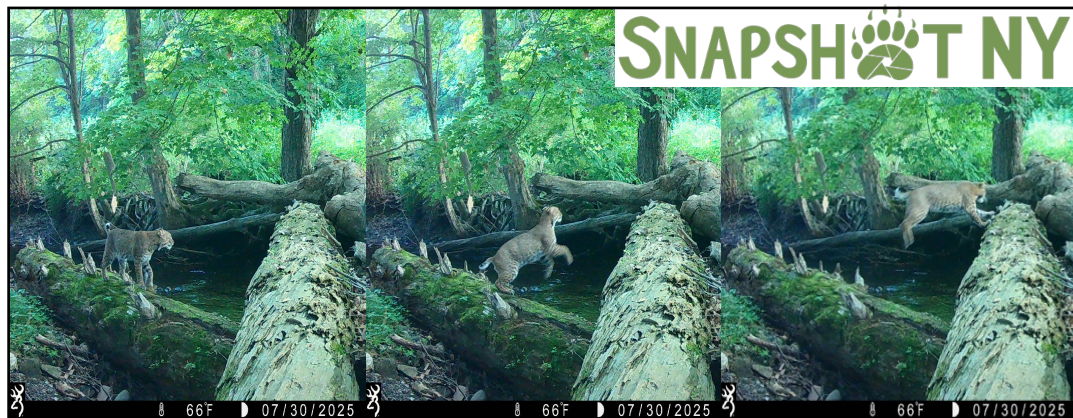


Photo credit: Linda Pistolesi

The cost to cover a single window on Monell is only \$15! If you are interested in funding a window, please email [LEISC](#).

WILDLIFE TRACKING ON CAMPUS: Lamont is participating in Snapshot NY!

[Snapshot NY](#) is a collaborative effort between Cornell University, the New York State Department of Environmental Conservation (NYSDEC), and volunteer citizen scientists across the state. The program divides the state into grid cells. By setting up a trail camera within each grid cell and using the Snapshot NY app to upload images, we, and other volunteers within the state are collecting data to help the NYSDEC monitor trends in abundance and distribution of mammals like black bears, fisher, coyotes, and bobcats. This information allows wildlife professionals to better manage and conserve wildlife in the state.



An example of the kind of photos collected by SnapshotNY. This triptych of a bobcat highlights the ability to not only collect population data on an animal, but also to collect behavioral data. Photo credit: SnapshotNY.