

What is the Age and Origin of the Spherule Bearing Layer in some Ross Sea cores?

Catherine Yeh¹, Dallas Abbott², Dee Breger², Mark Anders²

¹Department of Geology of Hofstra University, Hempstead, NY 11549-1000

²Lamont-Doherty Earth Observatory of Columbia University, Palisades, NY 10964



Lamont-Doherty Earth Observatory
COLUMBIA UNIVERSITY | EARTH INSTITUTE

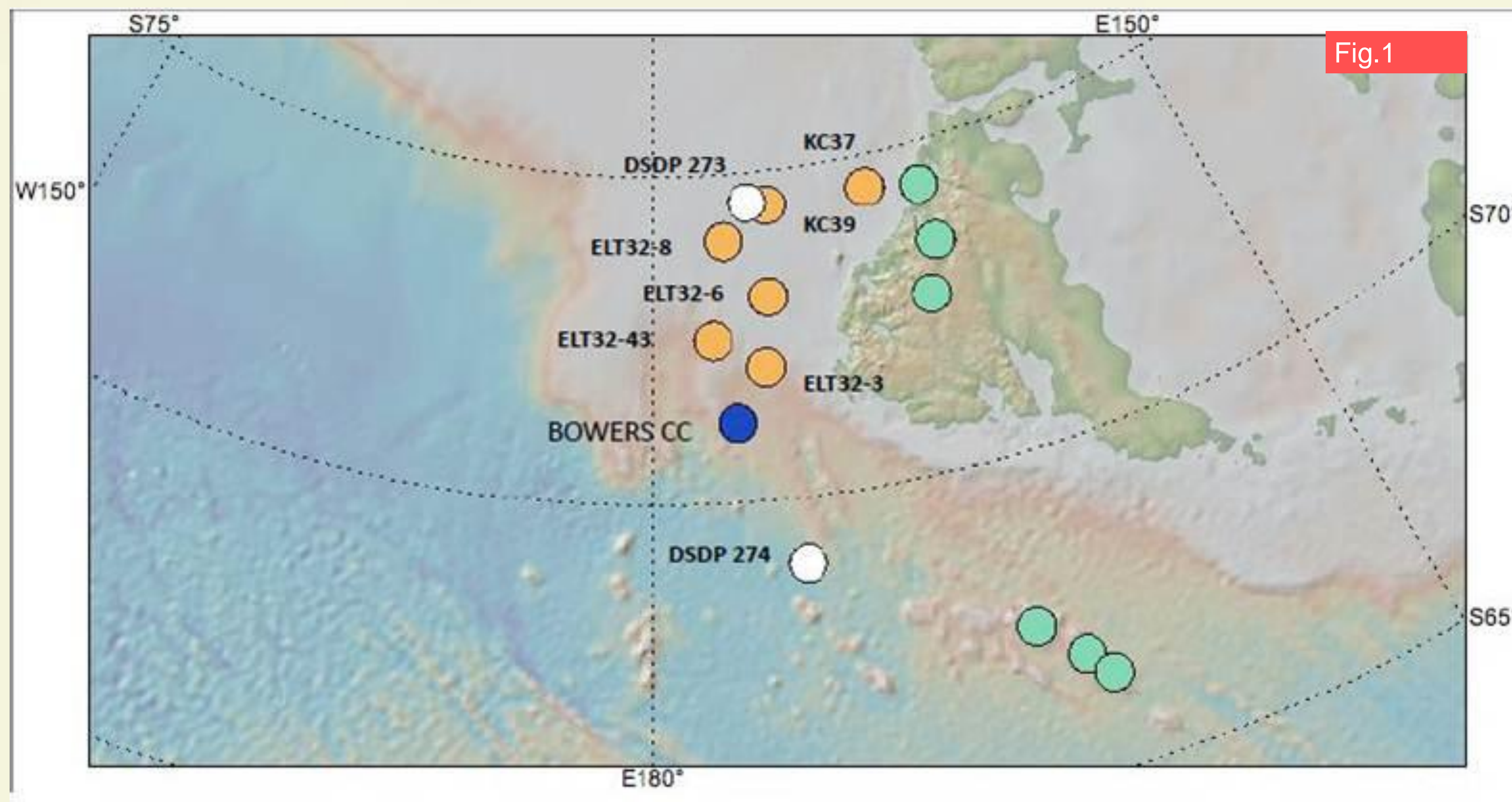


Fig. 1: GeoMap App image detailing the location of the Ross Sea Cores (DSDP 273, DSDP 274, ELT32-08, ELT32-43, ELT32-03, NBP 95-01 39KC)

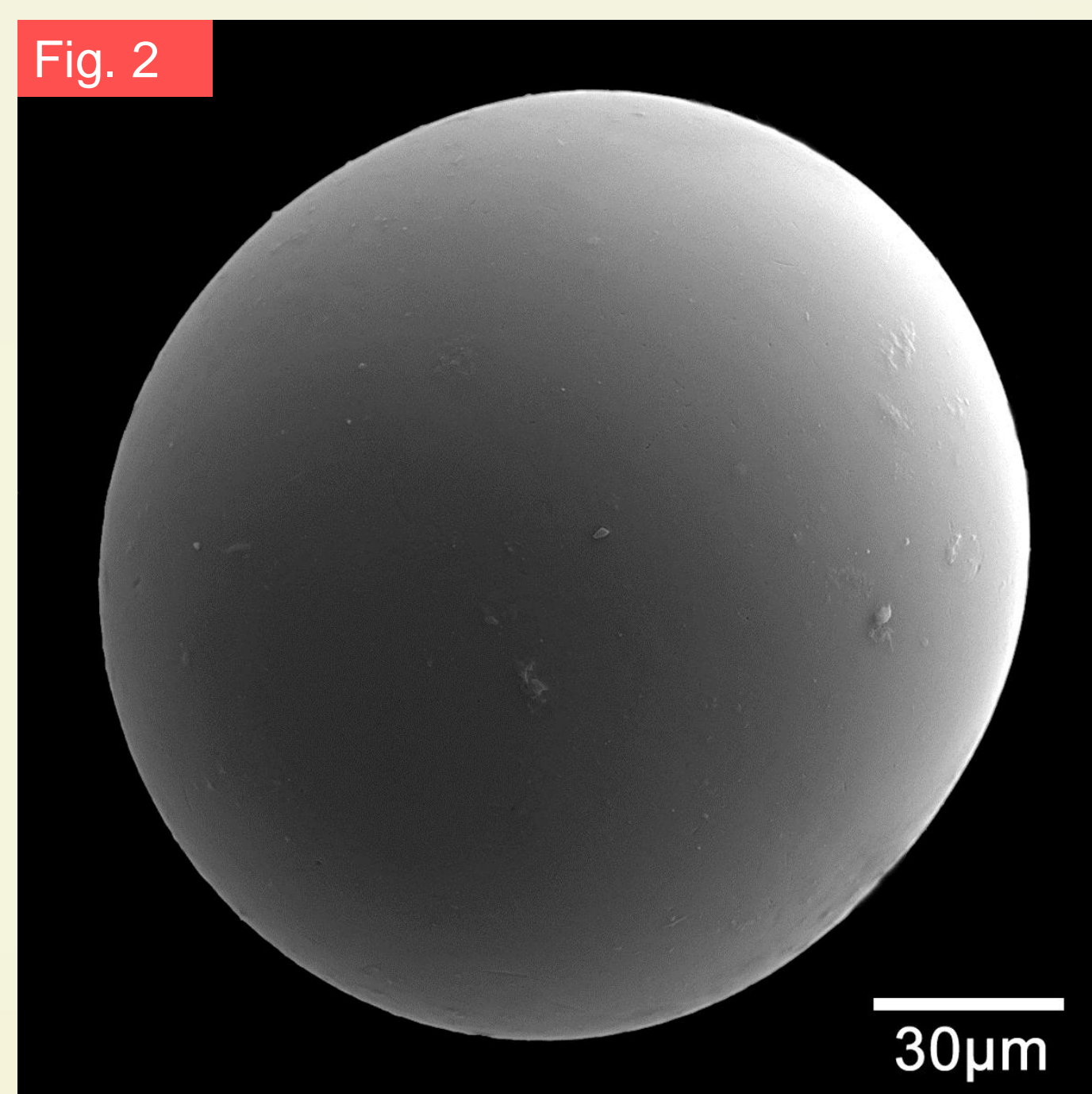


Fig. 2: SEM photograph of a pure SiO₂ spherule in the ELT 32-08



Fig. 3: Photograph of a shocked quartz grain from ELT 32-43. The straight black lines represent the three different sets of lamellae in different orientation.