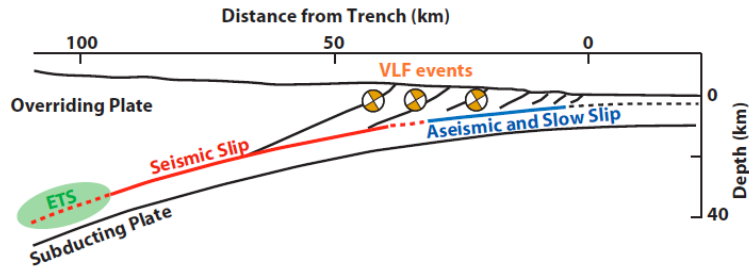


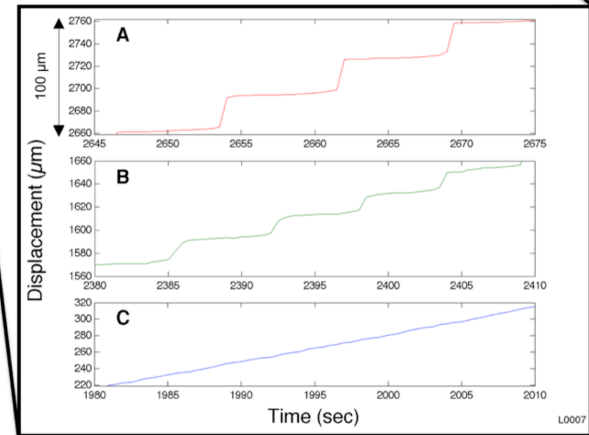
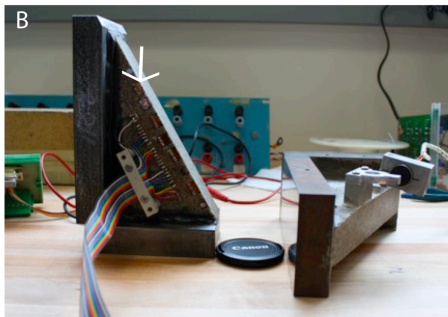
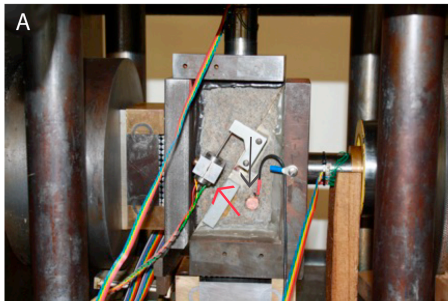
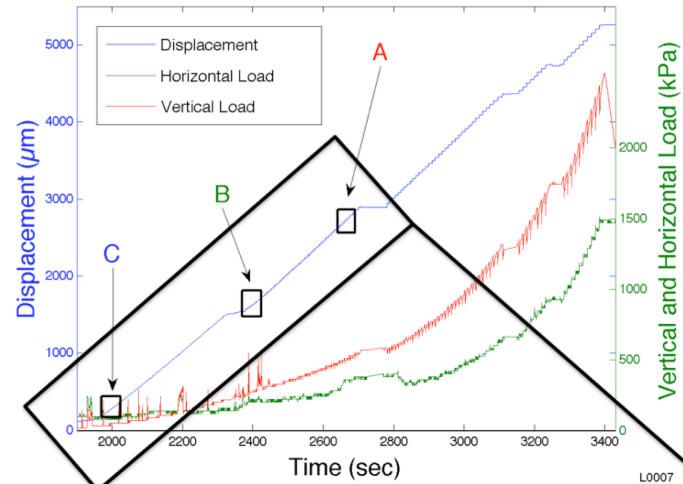
Exploring 'Slow Earthquakes' in Laboratory Experiments

Caitlin Dieck, Columbia University, Lamont-Doherty Earth Observatory Earth Intern Program

Heather Savage, Lamont-Doherty Earth Observatory



Marone, C., and E. Richardson. "Learning to Read Fault-slip Behavior from Fault-zone Structure." *Geology* 38.8 (2010): 767-68.



Increasing Normal Stress