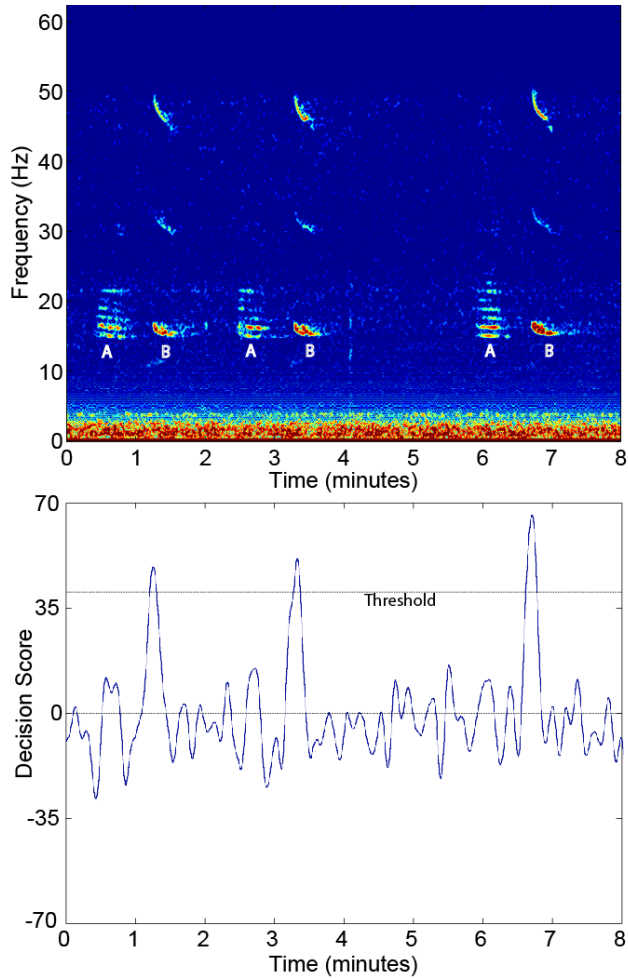
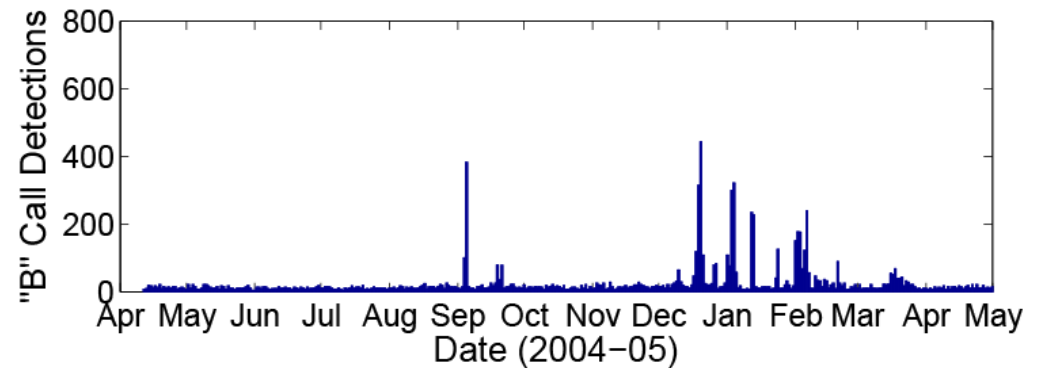
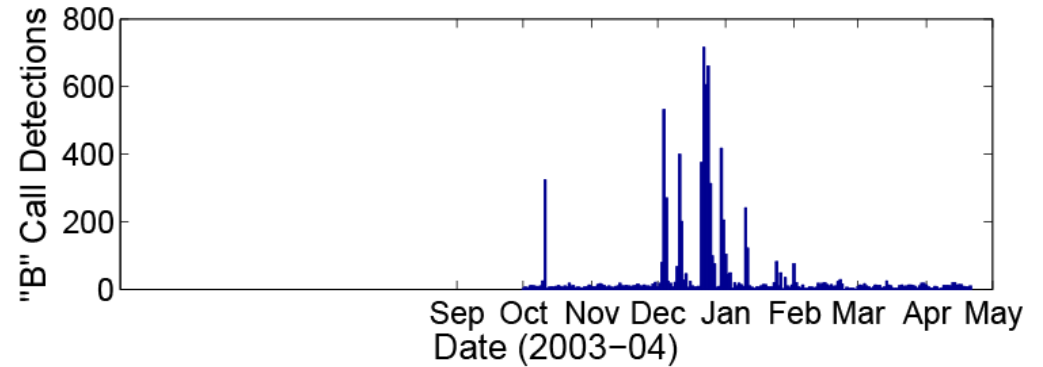


Automatic Detection of Blue Whale Calls at East Pacific Rise, 9°50'N

Hannah Moore and Tim Crone



Spectrogram (top) and corresponding decision score for detected AB call pairs.



- Detection is based on cross correlation of ocean bottom seismometer signal with a frequency sweep that mimics the "B" call.
- Detections per day from October 2003 to May 2005 show that December to February is the peak time for calling blue whales.